



FLEX

High recovery open cell foams for control and power when required.

FLEXSHIELD

High quality fibres impregnated with the best resins on the market, ensuring maximum durability and protection to our racket.

**EXO
COUNTER**

Frame Made of 100% carbon with low density foam reinforcement on the inside, This helps to improve reactivity on power shots and reduces the overall vibrations of the racket.



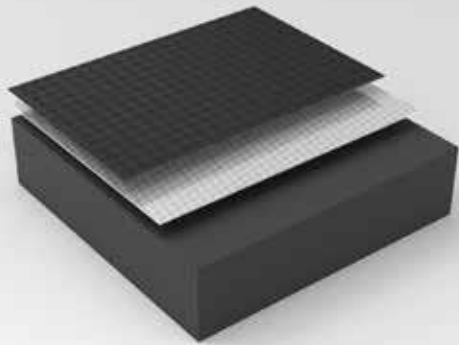
VIBRA-OUT

System of bridges at the heart of the blade that dissipate residual vibrations on each stroke.

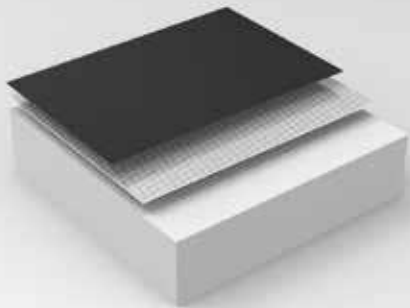


Technology of relief in the flat of the racket increasing the effects in each stroke.

FLEXSHIELD



FLEXSHIELD 3K CARBON FIBRE USES HIGH QUALITY CARBON YARNS BIAXIALLY INTERWOVEN, ACHIEVING GREATER DURABILITY IN THE PLANES OF THE BLADE.

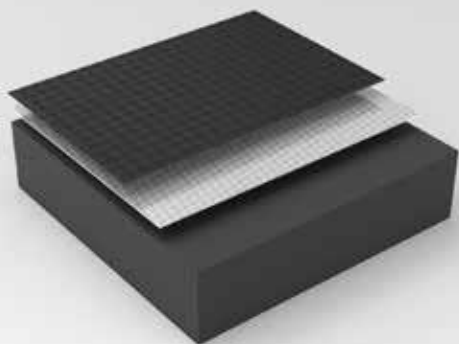


FLEXSHIELD GRAPHITE FIBRE USES A CARBON-DERIVED COMPOSITE THAT COMBINED WITH GLASS FIBRE INCREASES THE FLEXIBILITY OF THE GRAPHITE FIBRE. PALA.

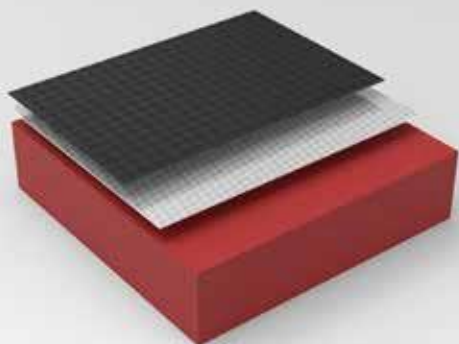


FLEXSHIELD GLASS FIBRE USES HIGH QUALITY GLASS FIBRE YARNS THAT ARE INTERWOVEN AND PROVIDE MAXIMUM COMFORT.

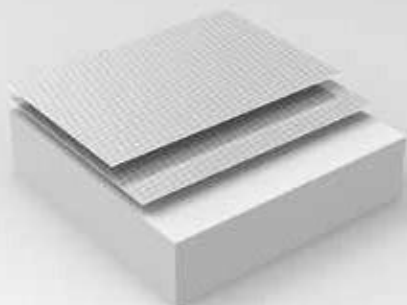
FLEXO



OUR FLEXO BLACKEVA IS DEVELOPED IN THE JOMA PADEL INNOVATION CENTRE. its composition provides a high recovery and ball exit in power shots. touch: medium-hard.



OUR FLEXO REDEVA IS DEVELOPED IN THE JOMA PADEL INNOVATION CENTRE. its composition provides a high recovery and ball exit in power shots. touch: medium-hard.



OUR WITHEVA SOFT FLEX IS DESIGNED TO IMPROVE THE COMFORT OF YOUR SHOTS. ITS COMPOSITION PROVIDES A GREAT BALL OUTPUT WHEN HITTING TO THE BALL LOW SPEED. FEEL: SOFT-MEDIUM.

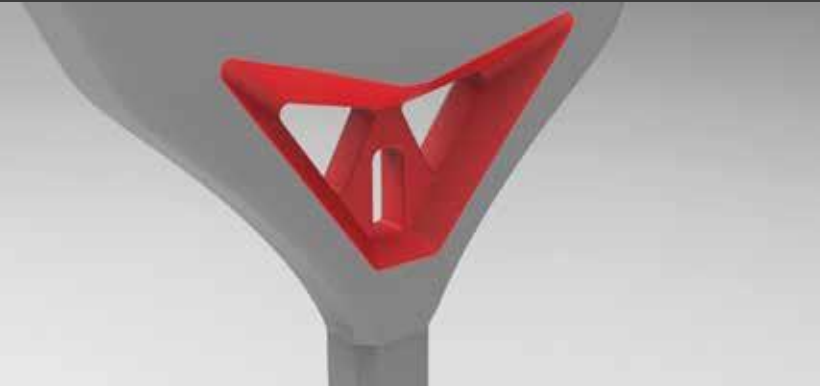
EXO
COUNTER



Frame made of 100% carbon with low density foam reinforcement on the inside, helping to increase reactivity on power shots and reducing the overall vibrations of the racket.



VIBRA-OUT



THE GOLD CORE IS COMPOSED OF TWO BRIDGES THAT REDUCE VIBRATIONS AND INCREASE THE STIFFNESS AGAINST HIGH TORSIONAL STRESSES IN THE CENTRAL AREA OF THE BLADE.



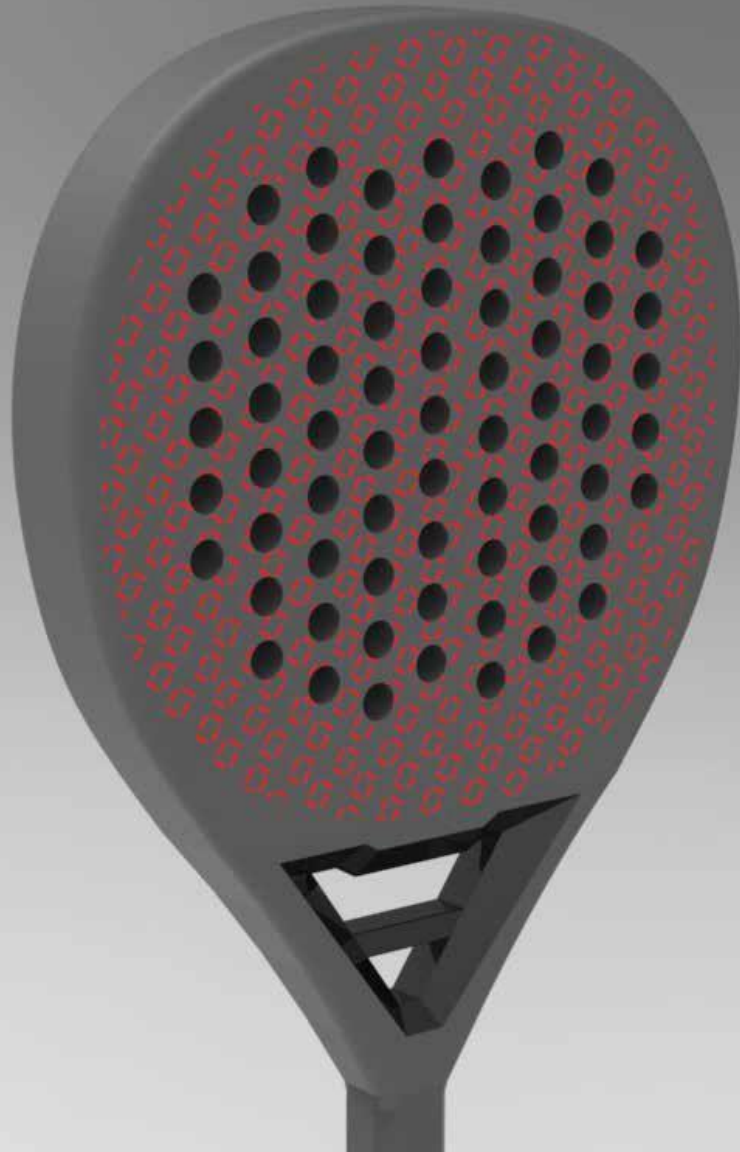
THE TOURNAMENT CORE IS MADE UP OF A BRIDGE THAT REDUCES VIBRATIONS IN A TRANSVERSAL WAY AND PROVIDES GREATER CONTROL IN THE BLOWS.



THE SLAM CORE IS COMPOSED OF A BRIDGE THAT REDUCES VERTICAL VIBRATIONS AND PROVIDES GREATER STIFFNESS ON MAXIMUM POWER SHOTS BY MINIMISING TORSION.



rotation



New relief system in the plans of the
The design of the pattern has been perfectly
studied to guarantee the right balance between
spin and control. The design of the pattern is
perfectly studied to guarantee the right balance
between spin and control in the shots.

OUR LINES

pro line

The top of the range of the collection. Through our gold, tournament and slam models, we have developed this line dedicated to expert players looking for maximum performance and rigidity in their racket.

flex line

The flex range is composed by the tournament and slam models, providing extra comfort in every stroke. This line has been designed for all those players who are looking for an easy to play racket without underestimating the power and control in their shots.

PRO line

GOLD



TECHNOLOGY

- Range: PROFESSIONAL
- Shape: DIAMOND
- Core: BLACK EVA
- Face: CARBON FIBRE 3K
- Frame: 100% CARBON FIBER
- Weight: 355-370 g
- Thickness: 38 mm
- Balance: HIGH

401180.116

The GOLD racket is a diamond-shaped, high-powered model designed to generate more inertia in acceleration shots thanks to its longer handle. It is designed for expert players who are looking to define points and get the most out of their game. Its high density FLEXO BlackEVA core combined with our FlexSHIELD 3K fibres guarantee the highest performance in every point. It has the new 100% carbon EXO COUNTER frame to guarantee durability and rigidity in the racket. Thanks to the VIBRA-OUT Gold system we have managed to reduce the vibrations produced when hitting the ball by 40%.

PRO line

TOURNAMENT



TECHNOLOGY

- Range: PROFESSIONAL
- Shape: HYBRID
- Core: EVA NETWORK
- Face: CARBON FIBRE 3K
- Frame: 100% CARBON FIBER
- Weight: 355-370 g
- Thickness: 38 mm
- Balance: MEDIUM

401179.604

The Tournament racket is a hybrid model, with high power and control. It is designed for expert players looking to get the most out of their game. Its high density FLEVO BlackEVA core combined with our FlexSHIELD 3K fibres guarantee the highest performance at every point. It has the new 100% carbon EXO COUNTER frame to guarantee durability and rigidity in the racket. Thanks to the VIBRA-OUT Tournament system we have managed to reduce by 40% the vibrations produced when hitting the ball.

PRO line

SLAM



TECHNOLOGY

- Range: PROFESSIONAL
- Shape: DIAMOND
- Core: BLACK EVA
- Face: CARBON FIBRE 3K
- Frame: 100% CARBON FIBER
- Weight: 355-370 g
- Thickness: 38 mm
- Balance: HIGH

401184.254

The SLAM PRO racket is a diamond-shaped model with high power and control. It is designed for expert players looking to define points and get the most out of their game. Its high-density FLEXO BlackEVA core combined with a with our FlexSHIELD 3K fibres guarantee the highest performance at every point. It has the new 100% carbon EXO COUNTER frame to guarantee durability and stiffness in the racket. Thanks to the VIBRA-OUT Slam system we have managed to reduce the vibrations produced when hitting the ball by 40%.

FLEX line

TOURNAMENT



TECHNOLOGY

- Range: MEDIUM
- Shape: HYBRID
- Core: BLACK EVA
- Side: GRAPHITE FIBRE
- Frame: 100% CARBON FIBER
- Weight: 355-370 g
- Thickness: 38 mm
- Balance: MEDIUM

401185.104

The TOURNAMENT FLEX racket is a hybrid model, with maximum comfort and ball output. It is designed for players who are just starting out in this sport, as well as for more experienced players who are looking for a comfortable and easy to use racket.

Its high density FLEXO BlackEVA core combined with our Graphite FlexSHIELD fibres guarantee a larger sweet spot and ball output at every point. It features the New 100% carbon EXO COUNTER frame to guarantee the durability and rigidity of the racket. Thanks to the VIBRA-OUT Slam system we have managed to reduce the vibrations produced when hitting the ball by 40%.

FLEX line

SLAM



TECHNOLOGY

- Range: MEDIUM
- Shape: DIAMOND
- Core: BLACK EVA
- Side: GRAPHITE FIBRE
- Frame: 100% CARBON FIBER
- Weight: 355-370 g
- Thickness: 38 mm
- Balance: HIGH

401186.154

The SLAM FLEX racket is a diamond-shaped model, with maximum comfort and ball output. It is designed for players who are just starting out in this sport, as well as for people with more experience in the game who are looking for a comfortable and easy to use racket. Its high density FLEXO BlackEVA core combined with our Graphite FlexSHIELD fibres ensure a larger sweet spot and ball output at every point. It features the New 100% carbon EXO COUNTER frame to guarantee the durability and rigidity of the racket. Thanks to the VIBRA-OUT Slam system we have managed to reduce the vibrations produced when hitting the ball by 40%.